

LEGEND AND NOTES

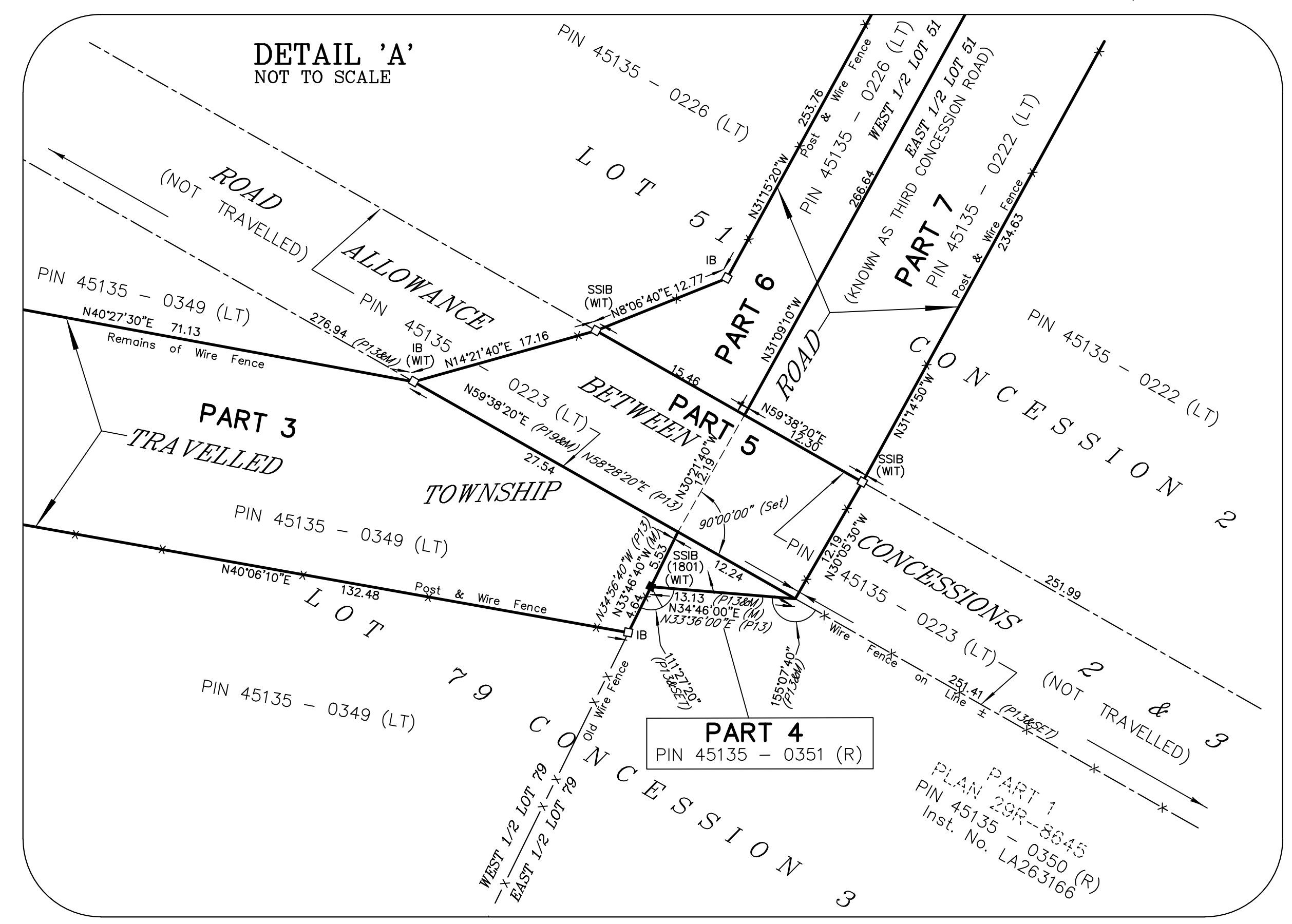
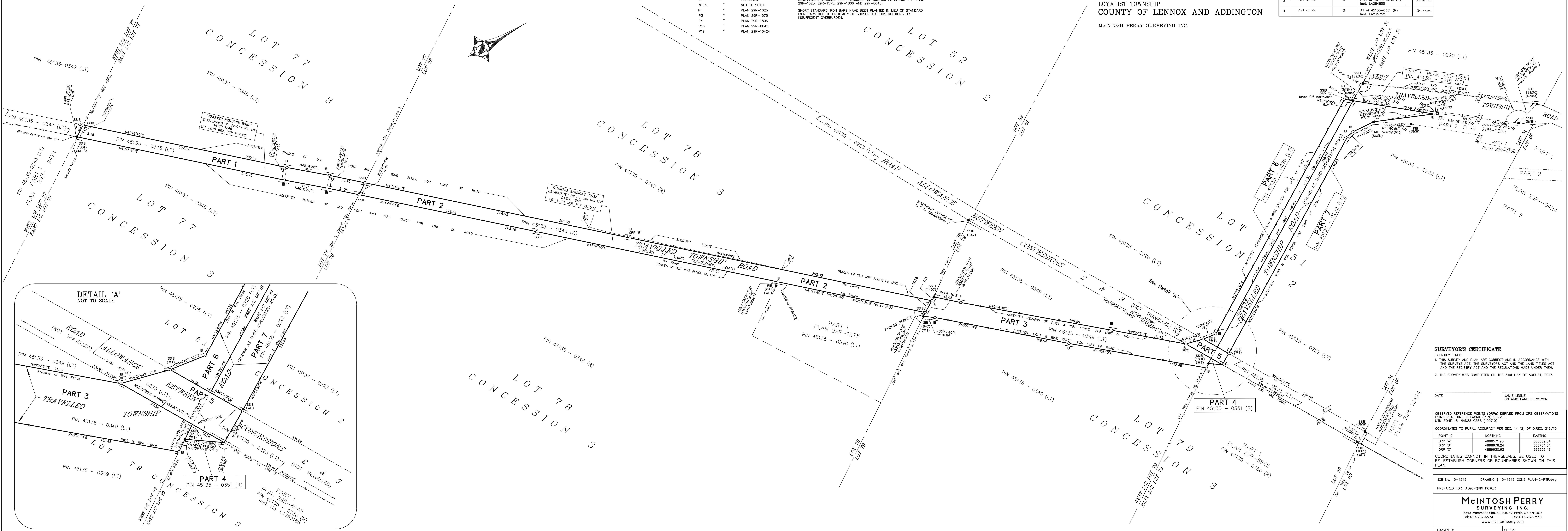
- Legend symbols for monuments, iron bars, crosses, pins, etc. and notes regarding distances, bearings, and monument types.

METRIC: DISTANCES AND COORDINATES SHOWN ON THIS PLAN ARE IN METRES AND CAN BE CONVERTED TO FEET BY DIVIDING BY 0.3048. SCALE 1:1000

PLAN OF SURVEY OF PART OF LOT 51, CONCESSION 2 AND PART OF LOTS 77, 78 AND 79, CONCESSION 3 AND PART OF THE ROAD ALLOWANCE BETWEEN CONCESSIONS 2 AND 3 GEOGRAPHIC TOWNSHIP OF AMHERST ISLAND LOYALIST TOWNSHIP COUNTY OF LENNOX AND ADDINGTON McINTOSH PERRY SURVEYING INC.

SCHEDULE - LAND TITLES table with columns: PART, LOT, CONCESSION, PIN, AREA. Includes SCHEDULE - REGISTRY table below it.

I REQUIRE THIS PLAN TO BE DEPOSITED UNDER THE LAND TITLES ACT AND THE REGISTRY ACT. PLAN 29R- RECEIVED AND DEPOSITED DATE: JAMIE LESLIE O.L.S.



SURVEYOR'S CERTIFICATE 1. I CERTIFY THAT: 1. THIS SURVEY AND PLAN ARE CORRECT AND IN ACCORDANCE WITH THE SURVEY ACT, THE SURVEYORS ACT AND THE LAND TITLES ACT AND THE REGISTRY ACT AND THE REGULATIONS MADE UNDER THEM. 2. THE SURVEY WAS COMPLETED ON THE 31st DAY OF AUGUST, 2017.

DATE: JAMIE LESLIE ONTARIO LAND SURVEYOR

Table with 3 columns: POINT ID, NORTHING, EASTING. Lists coordinates for ORP 'A', 'B', and 'C'.

COORDINATES CANNOT, IN THEMSELVES, BE USED TO RE-ESTABLISH CORNERS OR BOUNDARIES SHOWN ON THIS PLAN.

JOB No. 15-4243 DRAWING # 15-4243_CON3_PLAN-2-PT1.dwg PREPARED FOR: ALGONQUIN POWER

McINTOSH PERRY SURVEYING INC. logo and contact information including address, phone, fax, and website.