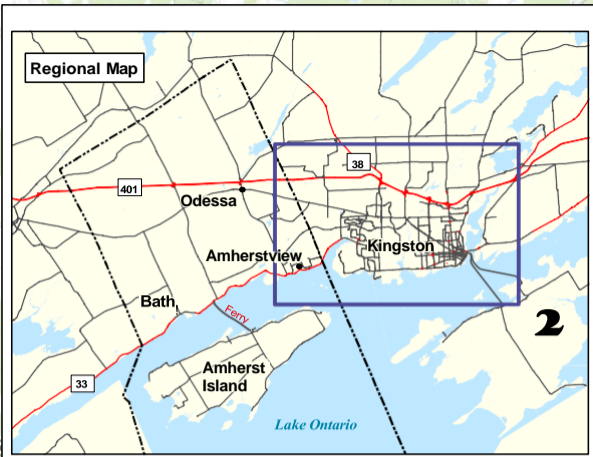
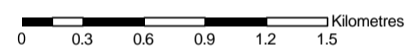


ACCESSIBLE TRANSPORTATION SERVICE AREA



Legend

- Route 1 - Montreal St. - St. Lawrence College
- Route 2 - Kingston Centre - Division St.
- Route 3 - Kingston Centre - Downtown
- Route 4 - Cataraqi Centre - Downtown
- Route 6 - Cataraqi Centre - St. Lawrence College
- Route 7 - INVISTA Centre - Rideau Heights
- Route 10 - Amherstview - Cataraqi Centre
- Route 11 - Cataraqi Centre - Kingston Centre
- Route 12 - Kingston Centre - CFB Kingston
- Route 14 - Crossfield Ave. - Waterloo Dr.
- Route 15 - Reddendale - Cataraqi Woods / Centre
- Route 16 - Division St. / Dalton Ave. - Train Station
- Accessible Transportation Service Area



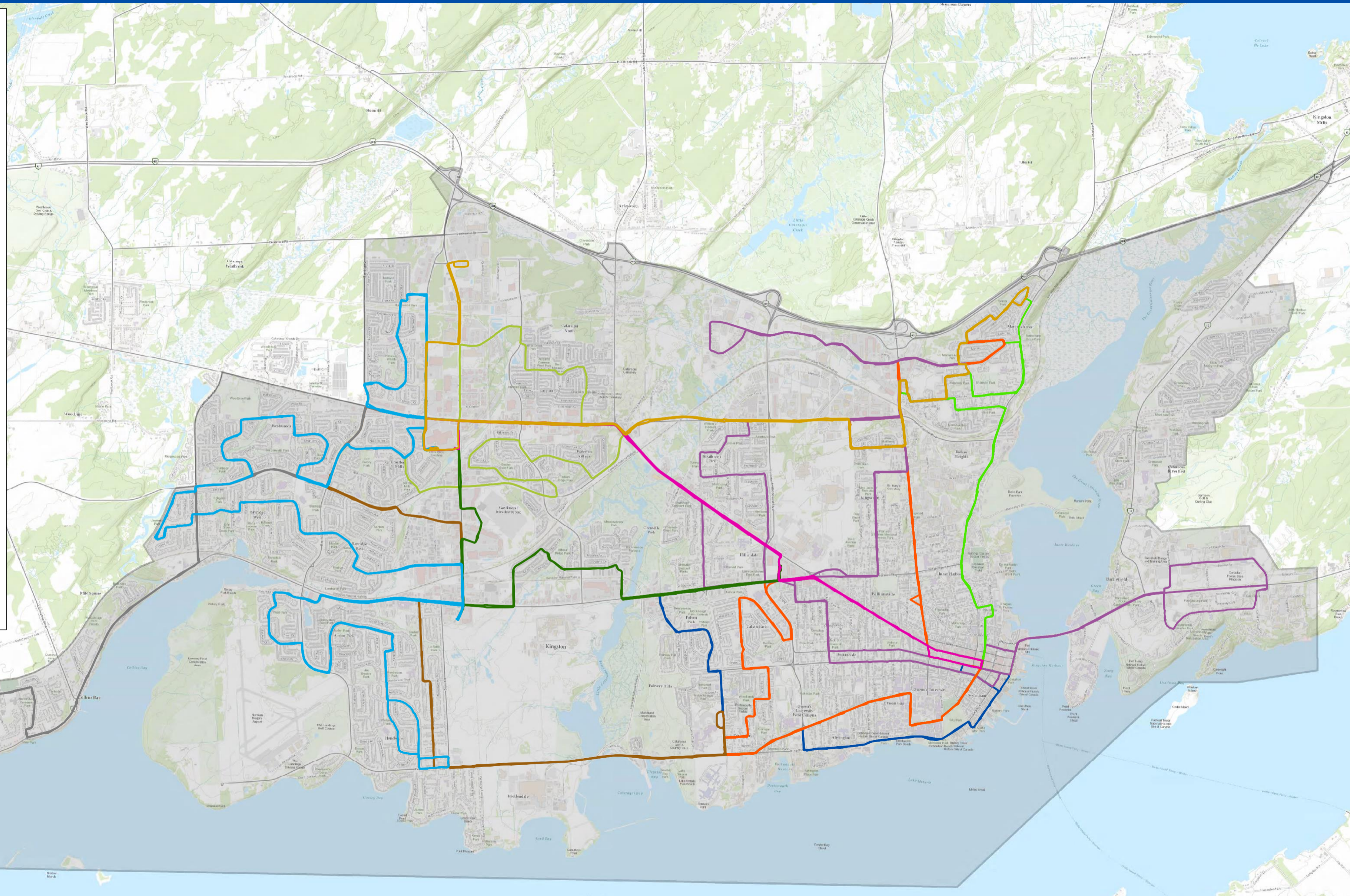
Economic Growth & Community Development Services
 P.O. Box 70, 263 Main Street
 Odessa, Ontario
 K0H 2H0
 613-366-7351

Production Date: October 18, 2021

Datum/Projection: Nad 83, UTM 18

Data Sources: Loyalist Township Database
 Land Information Ontario

The Corporation of Loyalist Township, its employees and agents, do not undertake to guarantee the validity of the contents of the digital or hardcopy map files, and will not be liable for any claims for damages or loss arising from their application or interpretation (by any party). This map is not intended to replace a survey, nor is it to be used for legal description. This map may not be reproduced without the permission of Loyalist Township. Please contact Loyalist Township for additional information.



2

Lake Ontario
 (Bay of Quinte - North Channel)